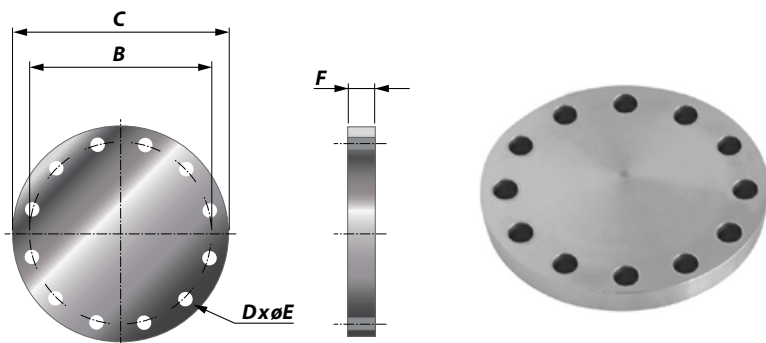


## BLIND FLANGE TYPE DIN 2576 - PN10



Article No.	Size (Inch)	NB (mm)	Pipe (mm)	B (mm)	C (mm)	D Number of holes	E Diameter of holes (mm)	F (mm)	Weight (kg)
212010120010	1	25	33.4	85	115	4	14	12	1
212010120013	1.25	32	42.2	100	140	4	18	12	1
212010120015	1.5	40	48.3	110	150	4	18	12	1
212010120020	2	50	60.3	125	165	4	18	12	1
212010120025	2.5	65	76.1	145	185	4	18	12	2
212010120030	3	80	88.9	160	200	4	18	12	3
212010120040	4	100	114.3	180	220	4	18	12	3
212010160050	5	125	139.7	210	250	8	18	16	6
212010160060	6	150	168.3	240	285	8	22	16	7
212010160080	8	200	219.1	295	340	8	22	16	10
212010160100	10	250	273.0	350	395	12	22	16	14
212010160120	12	300	323.9	400	445	12	22	16	19
212010200140	14	350	355.6	460	505	12	22	16	24
212010200160	16	400	406.4	515	565	16	26	16	29
212010200180	18	450	457.2	565	615	16	26	16	36
212010200200	20	500	508.0	620	670	20	26	16	42
212010200240	24	600	609.6	725	780	20	30	20	72
212010200280	28	700	711.2	840	895	24	30	20	93
212010200320	32	800	812.8	950	1015	24	33	20	119
212010200360	36	900	914.4	1050	1115	24	33	20	145
212010200400	40	1000	1016.0	1160	1230	28	36	20	173

### CHARACTERISTICS

**Flanges** Hole pattern according type DIN2573 - PN10 Standard

**Material** Flanges are produced out of Steel S235JRG2

**Range** Diameter range from 34.4 mm up to 1016 mm

**Thickness** From minimum 14 mm up to maximum 40 mm

**Temperature** The maximum allowable temperature is 600°C